

NORTH (magnetic)

Charles Washington Hall

RENOVATIONS

Corner of George & Washington Streets
Charles Town, W. Va.

For the
City of Charles Town
City of Ranson

Planning & Engineering (prime)

Hall Planning & Engineering, Inc
316 Williams Street
Tallahassee, FL 32303

Landscape Architecture

Stromberg/Garrigan & Assoc., Inc.
102 E. Main Street - The Penn Bldg
Somerset, PA 15501

Historic Preservation & Architecture

Landmarks SGA, LLC
102 E. Main Street - The Penn Bldg
Somerset, PA 15501

Structural Engineer

R.L. Silman Associates
1053 31st Street NW
Washington D.C. 20007

Mech/Elect Engineer

Comfort Designs
620 Pennsylvania Avenue
Winchester, VA 22601

Architect

GROVE & DALL'OLIO
ARCHITECTS PLLC



220 WEST KING • MARTINSBURG, WEST VIRGINIA • 25401

Issue/Revision Seal

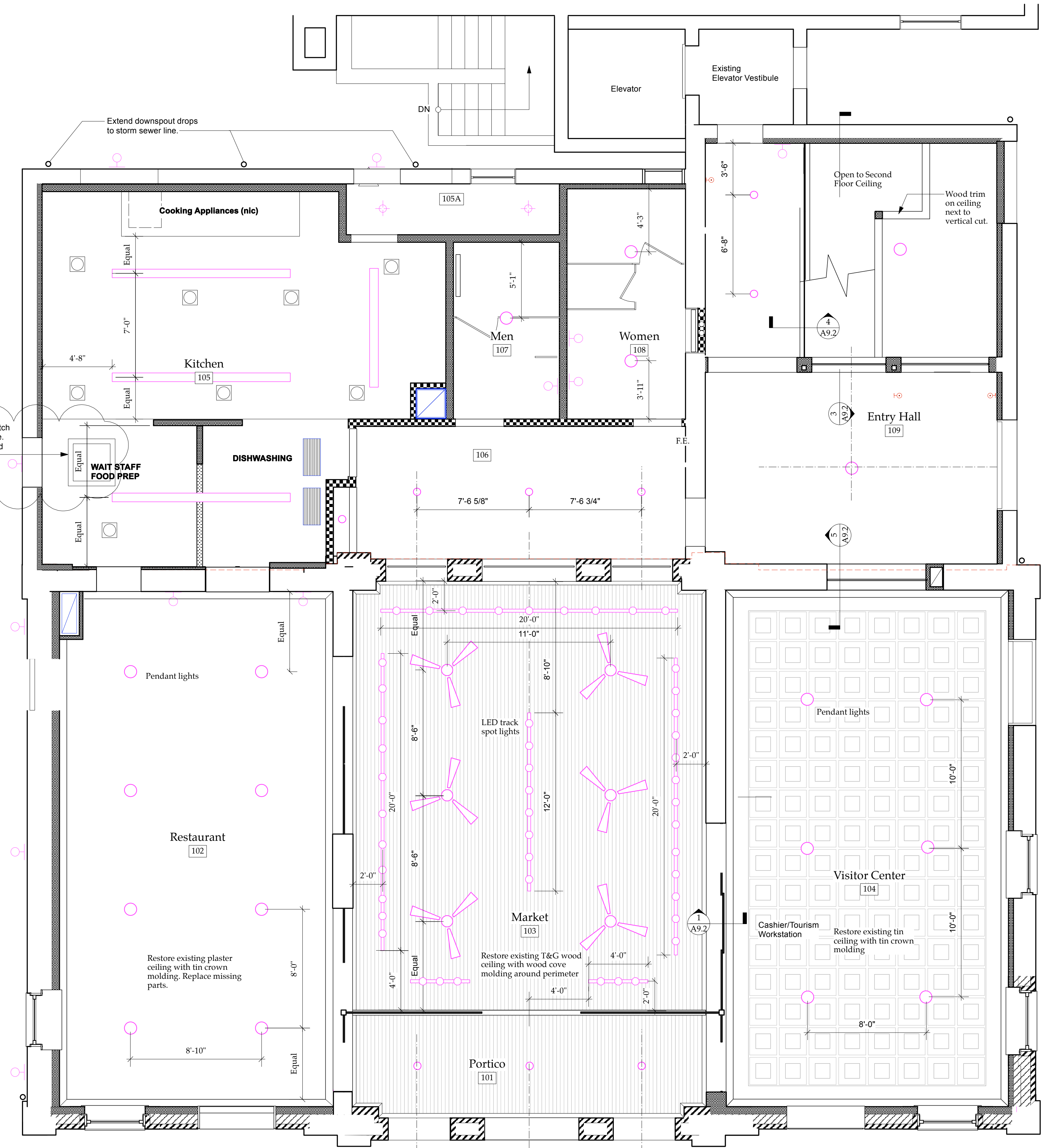
Issue/Revision	Seal
1 Bid Phase Revisions 03/04/15	

Drawing Title

First Floor Reflctd Ceiling Plan

Date 10/22/14
Scale Project Number 11105
Drawing Number

A7.1



30" x 30" access hatch to mechanical space. Trim out with painted wood 1 x 4.

Corner of Neighboring Building

1 First Floor Plan
Scale: 1/4" = 1'-0"