



701 S Ridge Avenue, Troy, OH 45374
1-888-4HOBART • www.hobartcorp.com

FD4/150 FD4/200 FD4/300 FOODWASTE DISPOSERS

MEDIUM SIZE FAST, ECONOMICAL

In a profitable foodservice operation, there's no space, time or budget allowance for inefficient food waste handling. Here are the medium sized disposers that can end food waste storage, removal and clean-up – fast, economically.

SPECIFICATIONS

MOTORS: Continuous duty rating, equipped with manual reset thermal overload inherent protection. Permanently lubricated ball bearings for upper and lower shaft support.

HOUSINGS: Heavy ductile iron upper housing. Ductile gray cast iron lower housing, primed and powder coated. Four bolts fasten the motor unit to the grind chamber, permit easy removal.

LEGS: Tubular stainless steel with flanged feet to support housing. Adjustable to 3" in either direction.

MOUNTING: All Hobart Disposers fasten to 7" I.D. (throat opening) cones. A vinyl isolating ring eliminates metal-to-metal contact at the cone mounting, reduces vibration and noise transmission.

STATIONARY SHREDDER RING: Abrasion resistant, heated treated cast ductile iron, 1 $\frac{3}{8}$ " high, 40 grinding teeth.

FLYWHEEL: Two hardened ductile iron cutter blocks (fastened to flywheel with loctite) are replaceable, can be indexed for new cutting edges. Hardened cast ductile iron flywheel is 8" diameter.

MOTOR SHAFT SEAL: Mechanical face-type seal consists of spring loaded carbon ring insert in chemical resistant neoprene bellows. Mating surfaces are protected from grit or fibers by being recessed into flywheel.

DRAIN CONNECTOR: The removable outlet flange is tapped for 2" pipe connection.

DUAL DIRECTIONAL GRINDING: Hobart Disposers operate in either direction of flywheel rotation. Direction of rotation can be controlled by the operator (to increase life and efficiency of grinding elements – back flywheel free of a "jam") when installed with Control Groups 5 & 6.

WEIGHT: Shipping – Approx. 158 lbs. (does not include accessory group or controls).



Complies with
ASSE 1009



HOBART

FD4/150 FD4/200 FD4/300 FOODWASTE DISPOSERS

FD4/150 FD4/200 **FD4/300** FOODWASTE DISPOSERS

HOBART

701 S Ridge Avenue, Troy, OH 45374
1-888-4HOBART • www.hobartcorp.com

ACCESSORY GROUPS

GROUP A



Nitrile Rubber
Scrapping Ring



Stainless Steel
Silver-Saver Sleeve
with Side Feed
Hole



Water Swirl



Vacuum Breaker

GROUP B



Nitrile Rubber
Silver-Saver Splash
Guard Ring



Water Swirl



Vacuum Breaker

GROUP C



Nitrile Rubber
Silver-Saver Splash
Guard Ring



Vacuum Breaker



Pre-Rinse Spray
with Wall Bracket

GROUP D



Nitrile Rubber
Silver-Saver Splash
Guard Ring



7" I.D. Stainless
Steel Weld-in
Adapter for Sink



Fixed Direction
Water Inlet for Sink



Vacuum Breaker

ACCESSORY COMPONENTS

CONES-SINK—Stainless Steel



Part No.

Cone 15" I.D. w/hole for
water swirl inlet 204007

Cone 18" I.D. w/hole for
water swirl inlet 204004

Cone 15" I.D. w/out swirl hole 204006

Cone 18" I.D. w/out swirl hole 204003



Sink 16" x 20" x 7" (7" opening)
w/hole for water inlet.....204015-2

WATER INLETS



Cone Water Swirl Inlet
1/2" N.P.T..... 204380



Fixed Direction Water Inlet (for sinks
or troughs) 1/2" N.P.T. 204346

FLOW CONTROL



8 Gallons per minute for
Models FD/150 through
FD/300 - 3/4" N.P.T. 204368

CONE COVER – STAINLESS STEEL



15" Cone cover w/feed hole 204024

18" Cone Cover w/feed hole..... 204023

CONE FEEDING ACCESSORIES



Part No.

Nitrile Rubber Scrapping Ring 202113



Stainless Steel Silver-Saver
Sleeve with side feed hole..... 203870

SILVER-SAVER SPLASH GUARD RING



Nitrile Rubber Silver-Saver
and Splash Guard Ring
(for 7" opening cones,
sinks and adapter)..... 202120

SINK ADAPTER – Standard Group D Accessory



7" I.D. Stainless Steel Adapter
for Welding to Sink
or Trough 204853

VACUUM BREAKERS – Luster Chrome Plated



3/4" 74338

PRE-RINSE SPRAYS

PR-3 Heavy-duty
Flexible Pre-rinse
Spray (38" high
with wall bracket)
ML-32333



Adapters are available to install Hobart Disposers
on existing cones. See Form F7543.

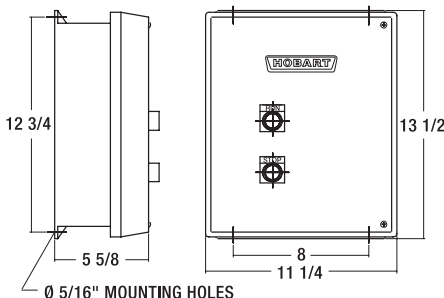


701 S Ridge Avenue, Troy, OH 45374
1-888-4HOBART • www.hobartcorp.com

FD4/150 FD4/200 **FD4/300** FOODWASTE DISPOSERS

ELECTRICAL CONTROL GROUPS

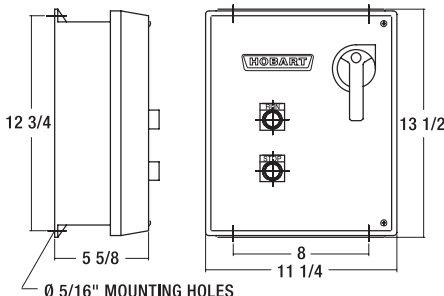
Listed by Underwriters Laboratories Inc., for use with FD3 and FD4 Disposers (50 Hz. Electrical Specifications not UL listed)



Group 5 - For all Models

Includes:
Magnetic Contactors
Pushbutton Start and Stop
Automatic Reversing
NEMA 4 Enclosure
Solenoid Valve (24 V only)

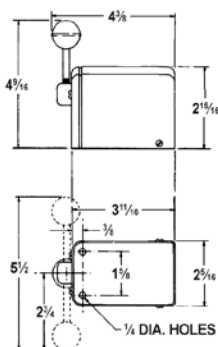
Approximate
Shipping Wt. 19 lbs.



Group 6 - For all Models

Includes:
Magnetic Contactors
Pushbutton Start and Stop
Automatic Reversing
Time Delay for water after shut-off
Line Disconnect
Solenoid Valve (24 V only)
NEMA 4 Enclosure

Approximate
Shipping Wt. 20 lbs.



Group 4 - For Model FD4/150 and FD4/200

Includes:
Manual Reversing Switch
NEMA 1 Enclosure or NEMA 4 Enclosure
Not available above 250 volts
Optional Solenoid Valve

Approximate
Shipping Wt. 11 lbs.

Model	H.P.	Ph.	Hz.	Volts	Rated Amps
FD4/150	1 1/2	1	60	120/208-240	16.0/8.0
	1 1/2	3	60	208-240/480	4.4-4.2/2.1
FD4/200	2	1	60	120/208-240	17.6/8.8
	2	3	60	208-240/480	6.0-5.8/2.9
FD4/300	3	3	60	208-240/480	9.9-9.0/4.5
FD4/150	1 1/2	1	50	110-120/220-240	15.0/7.5
	1 1/2	3	50	220-240/380-415	4.8/2.4
FD4/200	2	1	50	110-120/220-240	19.0/9.5
	2	3	50	220-240/380-415	6.3/3.3
FD4/300	3	3	50	220-240/380-415	10.4/5.2

The slant (/) indicates the dual voltage operation accomplished by motor lead connection: follow connecting diagram on motor.

SAMPLE SPECIFICATION

FD4/200 — B — 4 (240/60/3)

Electrical Specifications

Electrical Control Group

Accessory Group

Model Number

Cut hole 19" for 18" cone. Hole to be 16" for 15" cone.

Solenoid must be installed in upright position.

Disposer may be easily rotated for better drain line connection.

Center line at wall outlet of trap should not be higher than center line of disposer discharge opening

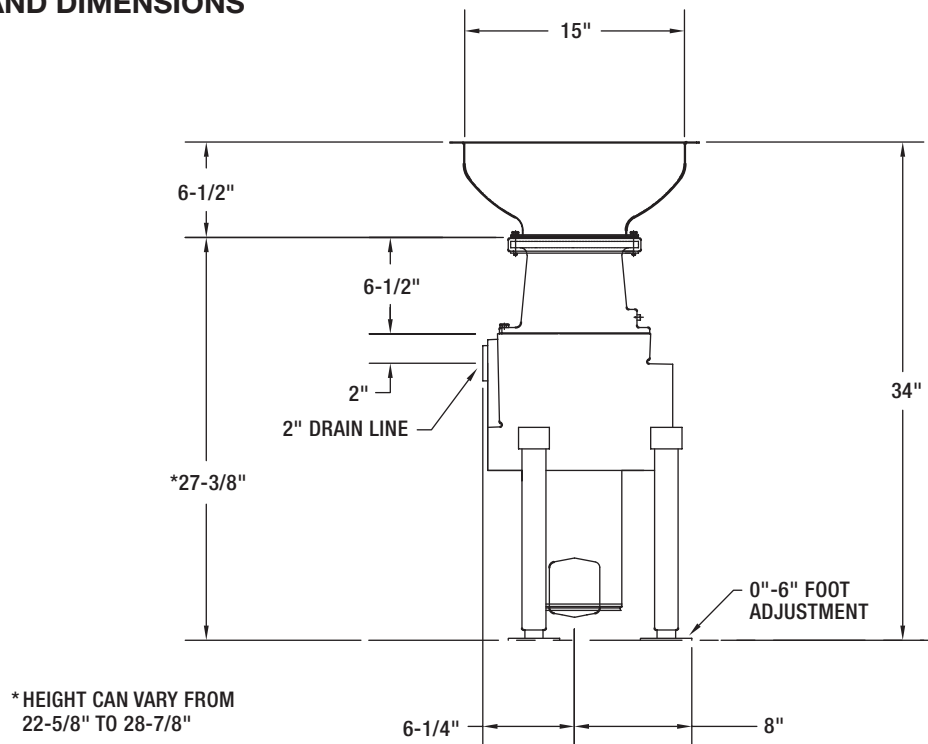
If water pressure is in excess of 60 P.S.I. install a pressure reducing valve.

FD4/150 FD4/200 **FD4/300** FOODWASTE DISPOSERS

HOBART

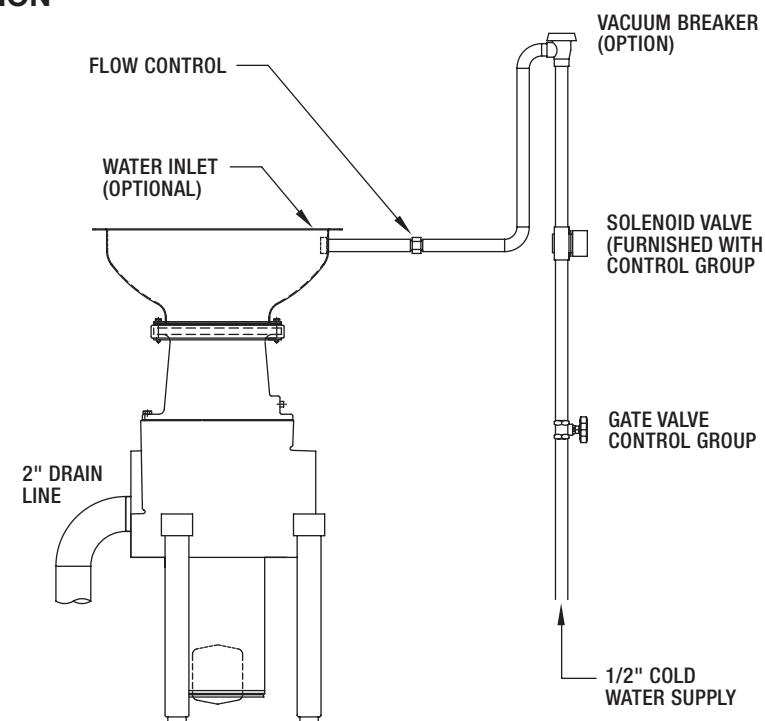
701 S Ridge Avenue, Troy, OH 45374
1-888-4HOBART • www.hobartcorp.com

DETAILS AND DIMENSIONS



NOTE: Specify 15" or 18" Cone When Desired.

TYPICAL INSTALLATION

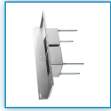


As continued product improvement is a policy of Hobart, specifications are subject to change without notice.

Regency 74" 16 Gauge Stainless Steel Two Compartment Commercial Sink with Galvanized Steel Legs and 2 Drainboards - 18" x 24" x 14" Bowls

Item Number: #60052182418G

SINKS ▶ COMPARTMENT SINKS ▶ 2 COMPARTMENT SINKS



Buy Now

Features

- 16-gauge type 304 stainless steel construction
- Designed with (2) 14" deep bowls and rounded corners for easy cleaning
- Galvanized steel legs with adjustable bullet feet for added stability
- Includes two 18" drainboards and 3 1/2" drain baskets
- Rolled edge contains splashes and overflow
- Outfit your facility with a long-lasting sink with this Regency 74" stainless steel two compartment sink with 2 drainboards. It's constructed from high-quality, 16-gauge type 304 stainless steel, making it more corrosion-resistant and durable than other sinks made from thinner, 18-gauge type 430 stainless steel. This sink features 2 sturdy, 18" drainboards so you can easily wash and dry dishes and utensils in one convenient location. It's dipped a minimum of 1/4" to facilitate better drainage, and the welded construction contributes to the long-lasting use and overall strength of this sink / drainboard combo.

The 14" deep bowls are die-stamped to a minimum of 1/4" to ensure proper drainage. Plus, each bowl includes a 3 1/2" basket strainer to catch food debris, which prevents the drain from clogging. For easy cleaning, each compartment has rounded corners so you can rinse and wipe down the sink.

A 9" tall backsplash is included and comes complete with (2) 1 1/8" diameter holes punched on 8" centers to accommodate 1 faucet (sold separately). This sink also includes a 1 1/2" raised rolled edge, which is 2" tall on the front and both sides to contain splashes and overflow. This model has galvanized steel legs and adjustable plastic bullet feet to keep the sink level and stable.

Overall Dimensions:

- Length: 74"
- Width: 29 1/2"
- Height: 43 3/4"
- Backsplash Height: 9"

Bowl Dimensions:

- Left to Right: 18"
- Front to Back: 24"
- Depth: 14"

Parts and Accessories



Regency 18 1/2" Galvanized Steel Leg

View Details



Regency Set Screw Packet with 25 Set Screws and Allen

View Details



Regency 3 1/2" Basket Strainer - Fixed Post

View Details



Regency Plastic Bullet Foot

View Details



Regency 3 1/2" Basket Drain with Strainer - 1 1/2" IPS

View Details

NEW *Tile Edge Design*



Model # K7-3-2030-24RL Shown

Item #: _____ **Qty #:** _____

Model #: _____

Project #: _____

FEATURES:

Tile edge for ease of installation.
16 gauge, 304 series stainless steel.
14" Deep Bowls.
Fabricated design.
Extra Large Sink bowls fabricated to meet NSF specifications with a 3/4" radius.
Placement of the welded leg assembly insures stability and furnishes direct support of the column load requirements for the entire sink unit.
Cross bracing on side legs.
Full skirt design.

CONSTRUCTION:

All TIG welded.
Welded areas blended to match adjacent surfaces and to a satin finish.
Gussets welded to a die-embossed reinforcing channel.

MECHANICAL:

Faucet holes provided.
Faucet holes on 8" centers.
Faucets are not included (see accessories).
Waste drains are 1 1/2" IPS basket type and are included.
14" Water Level.

MATERIAL:

Entire unit is 16 gauge type "304" series stainless steel.
LEGS are 1 5/8" diameter heavy gauge tubular stainless steel with stainless steel gussets and 1" adjustable stainless steel bullet feet.

MODEL #	Bowl Size (B) x (A) x 14"	# of Comp.	Drbd. Size (D)	Overall Size (L) x (W)	(X)	Weight	Cu. Ft.
K7-3-1432-18RL*	14" x 32" x 14"	3	18"	78" x 38"	19"	290 lbs.	50
K7-3-2030-24RL*	20" x 30" x 14"	3	24"	108" x 36"	18"	345 lbs.	78
K7-3-2430-24RL	24" x 30" x 14"	3	24"	120" x 36"	18"	380 lbs.	86
K7-3-3024-24RL	30" x 24" x 14"	3	24"	138" x 30"	15"	395 lbs.	84
K7-3-3030-24RL	30" x 30" x 14"	3	24"	138" x 36"	18"	420 lbs.	98

REQUIRED ACCESSORIES	Model #
DRAINS	
FAUCETS	

* Provided with 1 set of faucet holes

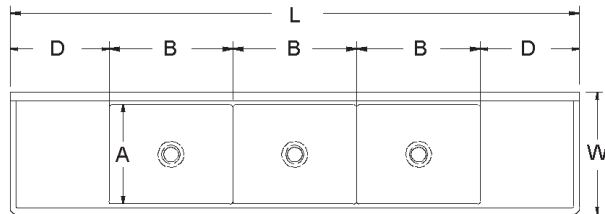
*** For 14 Gauge Units Add -14 at end of Model Number ***

DIMENSIONS and SPECIFICATIONS

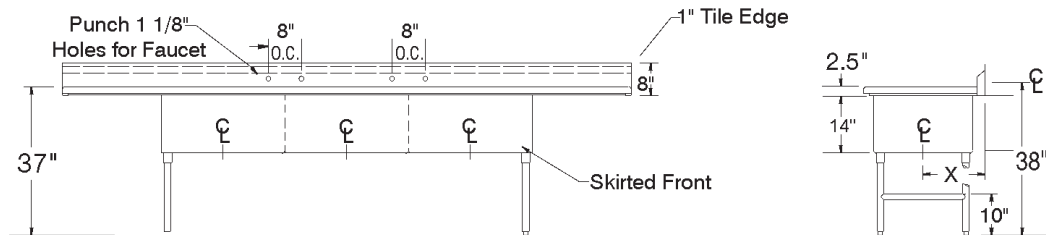
TOL Overall: $\pm .500"$
Interior: $\pm .250"$

ALL DIMENSIONS ARE TYPICAL

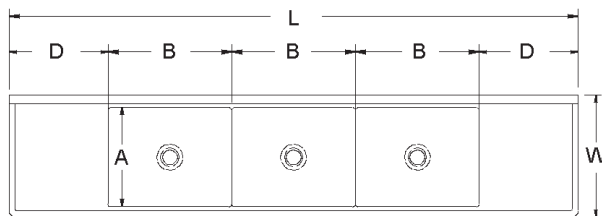
K7-3-2430-24RL, K7-3-3024-24RL, K7-3-3030-24RL



Two Faucet Configuration



K7-3-2030-24RL & K7-3-1432-18RL



Single Faucet Configuration

