

GROVE & DALL'OLIO
ARCHITECTS PLLC

Addendum #3

To:	General Contractors	From:	Lisa Dall'Olio
Attn:	Estimating Departments	Pages:	3 plus attachments
Fax:		Date:	11/1/2021
Re:	Claggett Center Barn		

The following information clarifies the information in the drawings dated 10/1/2021:

- 1) Retaining wall detail on A7.2 shows 5' max. height for 20" wide wall. Retaining wall design and reinforcement details are not on the structural drawings. Are the details available somewhere else?
- 2) Answer: The revised detail is shown on the attached revised Sheet A7.2.

- 3) Is the oak flooring to be exposed outside the storefront doors in the wagon bays?

Good Question! We have decided that the flooring boards that will end up outside the storefront sections on the East and West need to be mahogany and are to have aluminum flashing installed underneath the finished flooring carried to the exterior with a drip edge.

- 4) Are the hopper windows above door 204 and 205 Marvin Windows or are the windows above 204 and 205 to be storefront windows?

They are to be operable awning windows approximately 3'3" wide by 2'10" high. Tubelite CVW3700 Series to match storefront color. They no longer make hopper so awnings will do. Please include two low-e coatings on #2 and #4 surfaces and warm edge spacers in the glass.

- 5) Aluminum Doors D204 and D205 are indicated as having a "hopper vent" furnished and installed in the transoms above the doors. I do not see a window specification for these vents, please advise what is to be used for these vents. The manufacturer specified for the storefront, Tubelite, does not offer aluminum window vents in their product line.

The information in item #3 above is directly from Tubelite technical support. They have confirmed that the CVW3700 will work with the storefront system specified.

- 6) The only manufacturer specified is Tubelite, who we do very little business with in the course of a year. The design and performance characteristics are right out of their literature. And seeing that the owner has a historical consultant involved along with other consultants this project may have been strictly designed around the specified system which is quite high performing as the doors are thermally broken and the 6-1/2" storefront includes a double thermal break. By the specifications any other manufacturer must be prior approved for use. I looked at addenda #1 and #2 and it does not



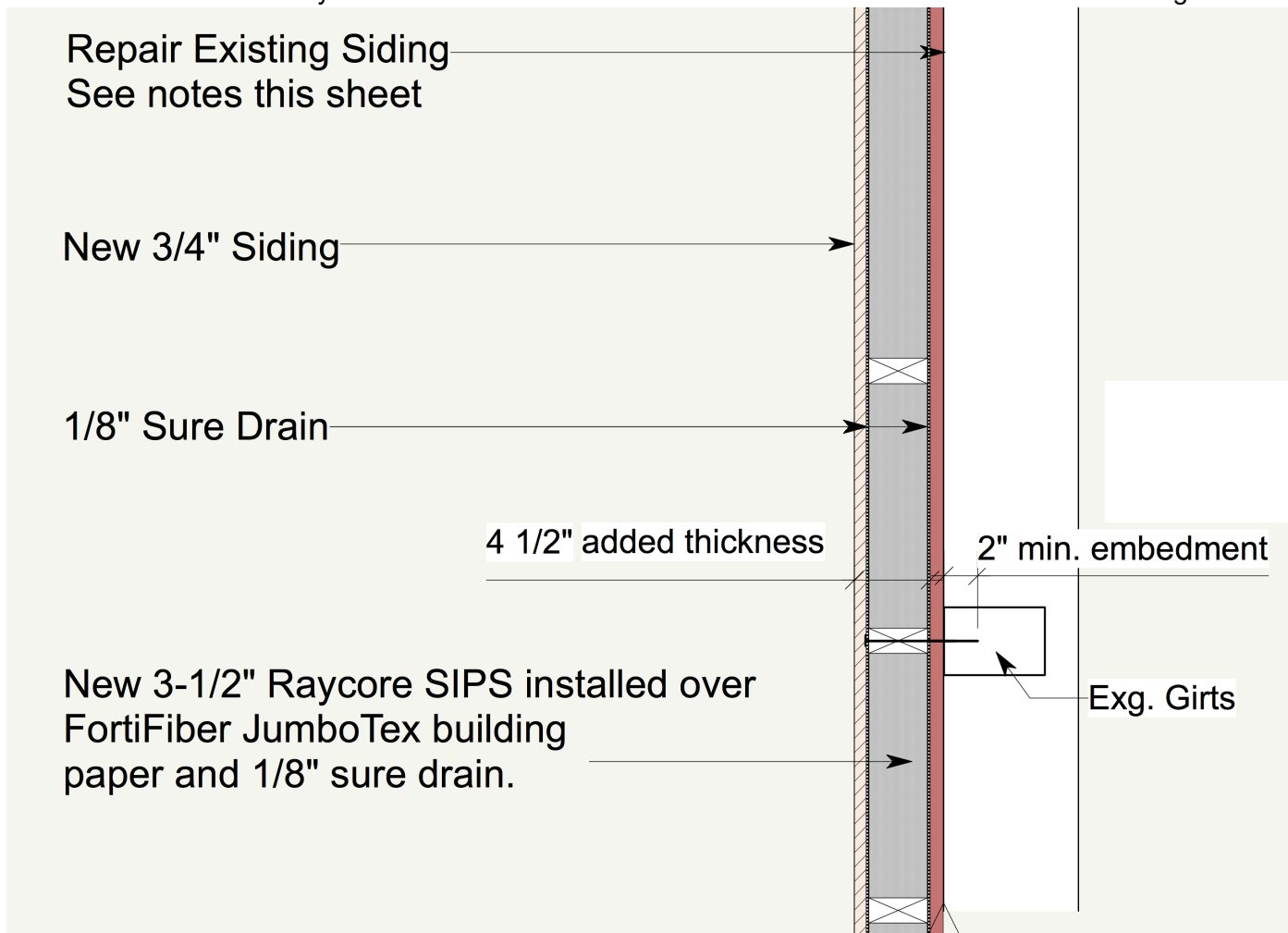
appear any other manufacturers were submitted and/or approved. I will try and get pricing from Tubelite but not sure how they will respond. Please advise if anyone else has been approved.

Answer: The 6-1/2" depth system was specified because of the tall height of the assemblies. The double thermal break is to provide an energy efficient system that meets the Maryland code provisions and does not generate condensation on the backside of the metal when there are large crowds inside on winter days. If another manufacturer offers a similar system that meets the design criteria you are welcome to submit it for review and approval.

- 7) The question was asked whether a Garaventa LULA elevator would be acceptable as an alternative to the Custom LULA issued in the addendum.

Answer: Yes, Garaventa which requires a 66" wide shaft would be acceptable as long as the finishes and features and minimum cab clearances are maintained.

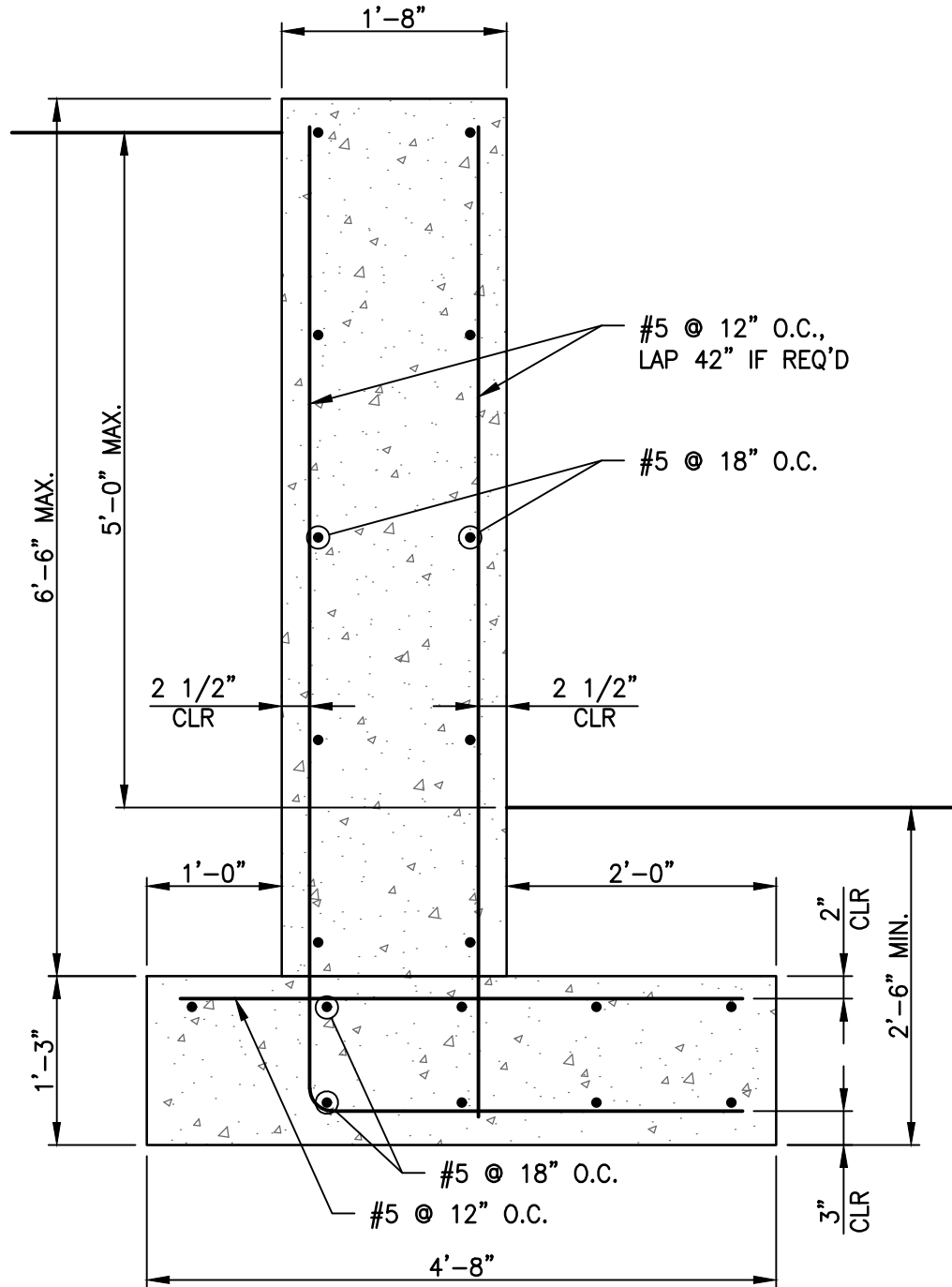
- 8) The option of using SIPS on the exterior has been further explored. Please include in your pricing the add/deduct option to replace the proposed double layers of rigid wall insulation and nailers with 3-1/2" RayCore SIPS run horizontally(see below detail). The Upper Level Plan has been revised and is attached. It correctly shows the additional thickness of the exterior insulation and new siding.

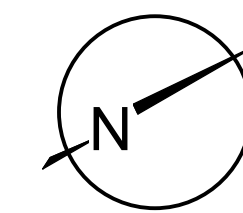


- 9) The Form of Proposal has been revised to include unit prices and the above add/deduct option. It is attached for your use.
- 10) The stair railing details have been revised to meet ADA requirements and to provide a code required guard. The revised detail is shown on the attached revised Sheet A7.2.

- 11) The Director of the Claggett Center has stated that 100' of fiber optic cable would be required to reach the new addition from the Claggett Center Monocacy Hall.
- 12) The configuration of fans on the upper level has changed. There will be two 8' fans up high in the two end bays and four 6' fans in the center two bays. The manufacturer, model and finish will stay the same. Just the size and quantity has changed. A revised reflected ceiling plan and section have been attached.
- 13) The deadline for questions will be November 9th at 4PM. The last addendum will be issued on November 10th at 4PM.

END OF Addendum #3



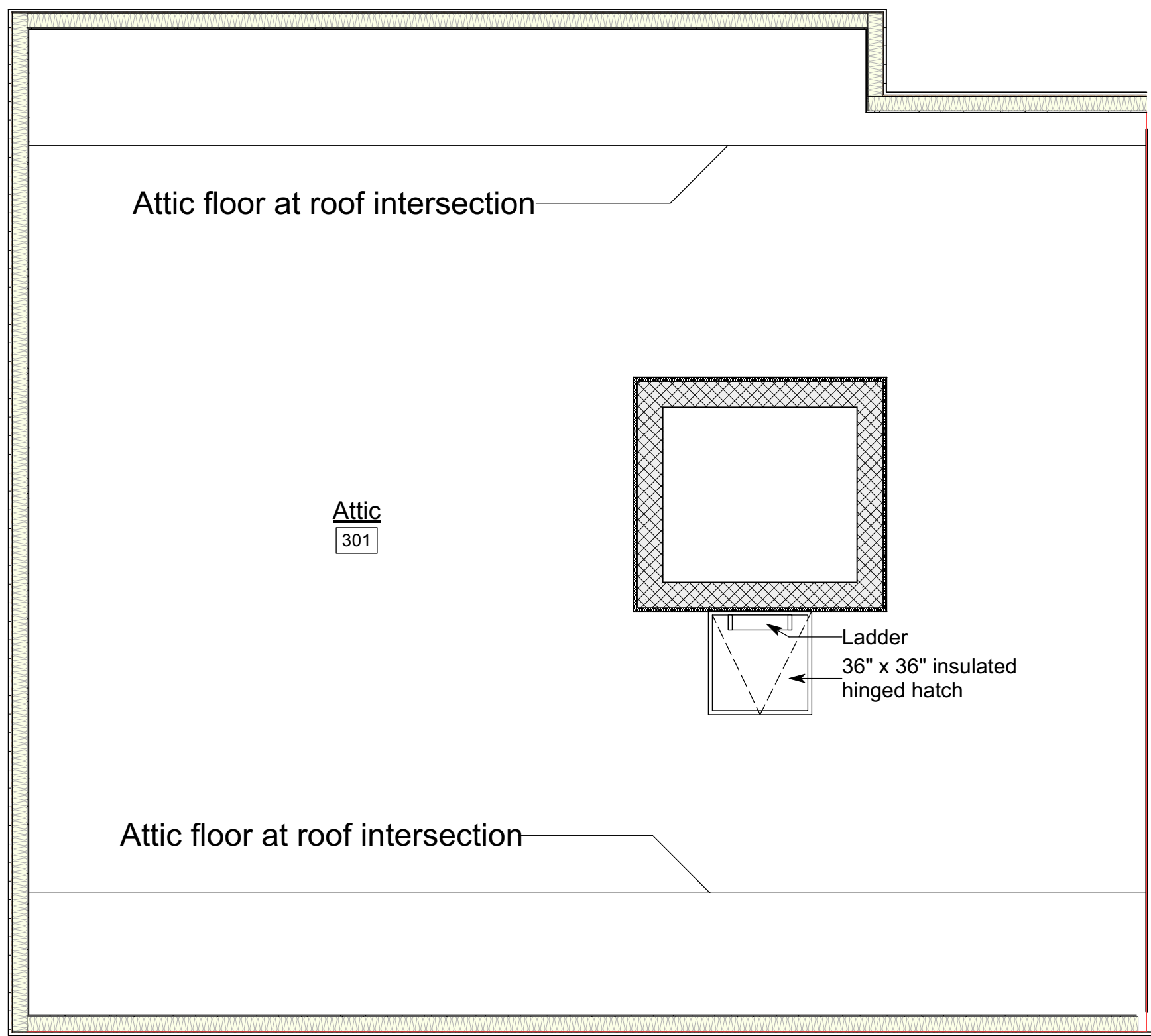


NORTH (magnetic)

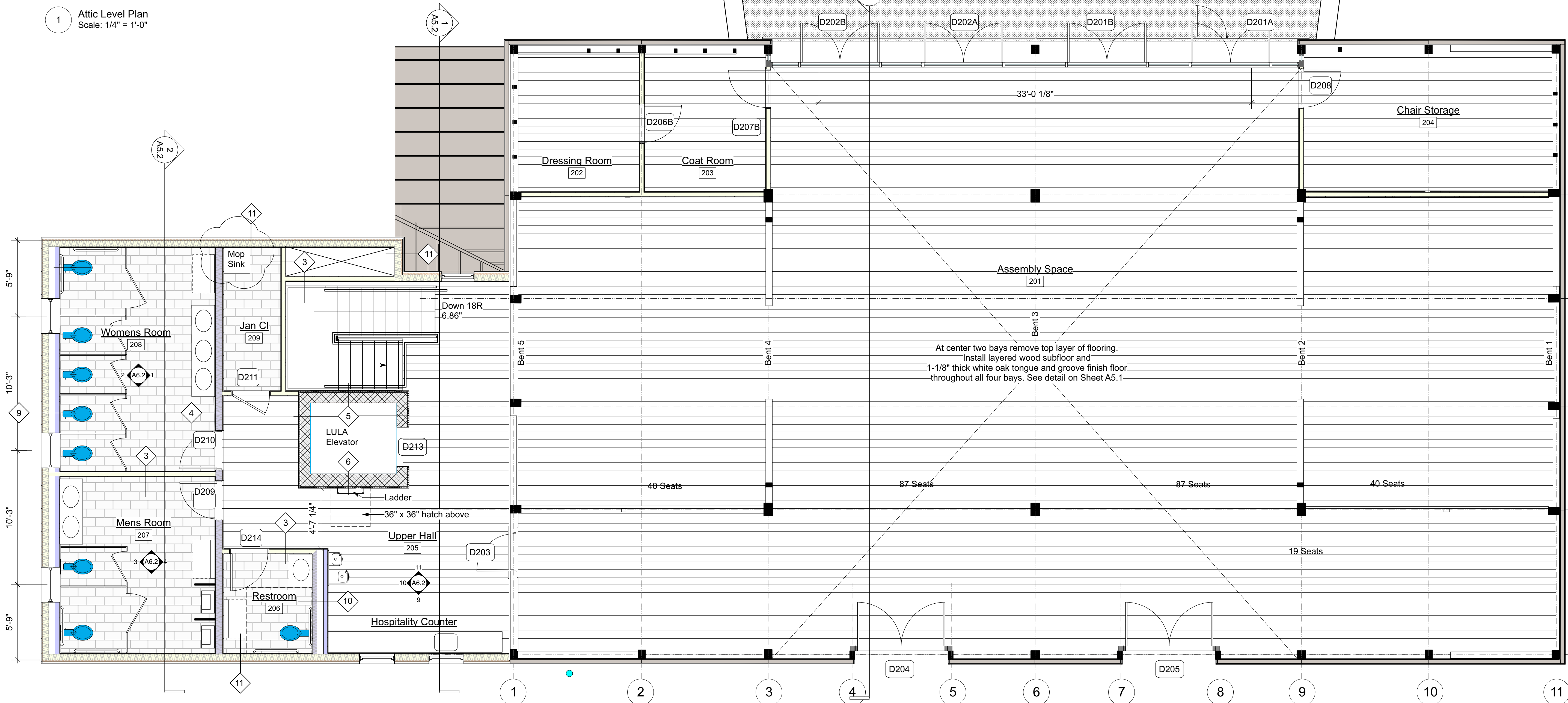
Claggett Center Barn Renovation

3035 Buckeystown Pike
Adamstown, MD 21710

BID SET
NOT FOR
CONSTRUCTION



1 Attic Level Plan
Scale: 1/4" = 1'-0"



1 Wagon Level Plan
Scale: 1/4" = 1'-0"

Preservation Consultant

Douglass C. Reed
Historic Structures Consultant
301-730-2699
doug@preservationassociatesinc.com

Structural Engineer

Matonak & Associates
931 Sweeney Drive
Hagerstown, MD 21740

Mech/Elect Engineer

Comfort Designs
620 Pennsylvania Avenue
Winchester, VA 22601

GROVE & DALL'OLIO
ARCHITECTS^{PLLC}



18 W. BOSCAWEN • WINCHESTER, VIRGINIA • 22601

Issue / Revision

Scale

Drawing Title

**Wagon
Level Plan**

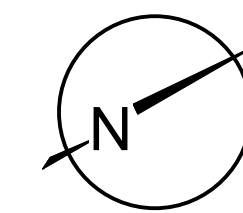
Date 10/1/2021

Scale As Noted

Project Number 20180

Drawing Number

A3.3



NORTH (magnetic)

Claggett Center Barn Renovation

3035 Buckeystown Pike
Adamstown, MD 21710

**BID SET
NOT FOR
CONSTRUCTION**

Preservation Consultant

Douglass C. Reed
Historic Structures Consultant
301-730-2699
doug@preservationassociatesinc.com

Structural Engineer

Matonak & Associates
931 Sweeney Drive
Hagerstown, MD 21740

Mech/Elect Engineer

Comfort Designs
620 Pennsylvania Avenue
Winchester, VA 22601

GROVE & DALL'OLIO
ARCHITECTS^{PLLC}



18 W. BOSCAWEN • WINCHESTER, VIRGINIA • 22601

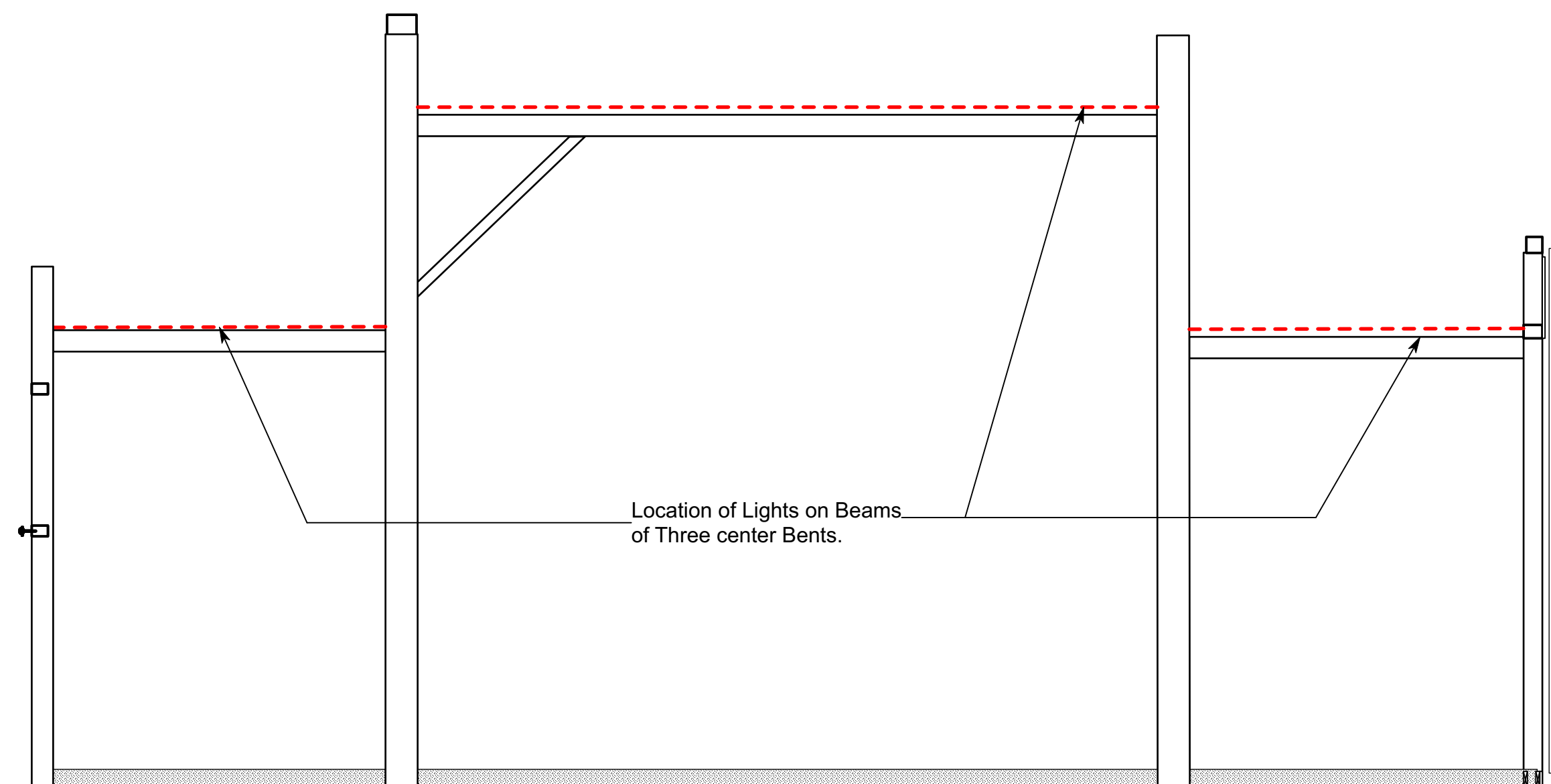
Issue / Revision	Scale

Drawing Title

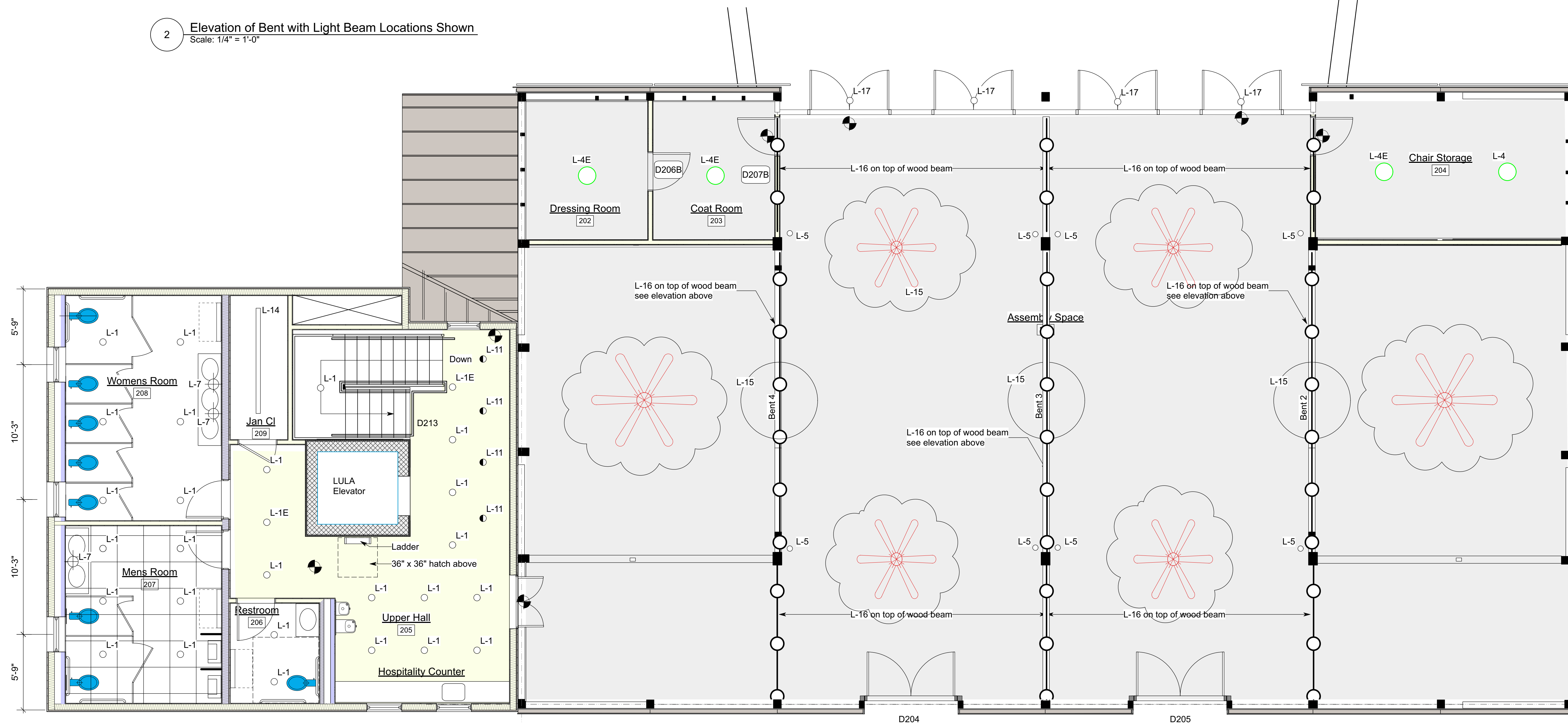
**Wagon Level
Lighting Plan**

Date	10/1/2021	Project Number	20180
Scale	As Noted	Drawing Number	

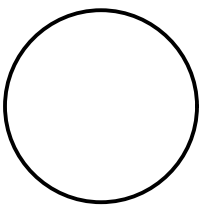
A3.5



2 Elevation of Bent with Light Beam Locations Shown
Scale: 1/4" = 1'-0"



1 Wagon Level Reflected Ceiling Plan
Scale: 1/4" = 1'-0"

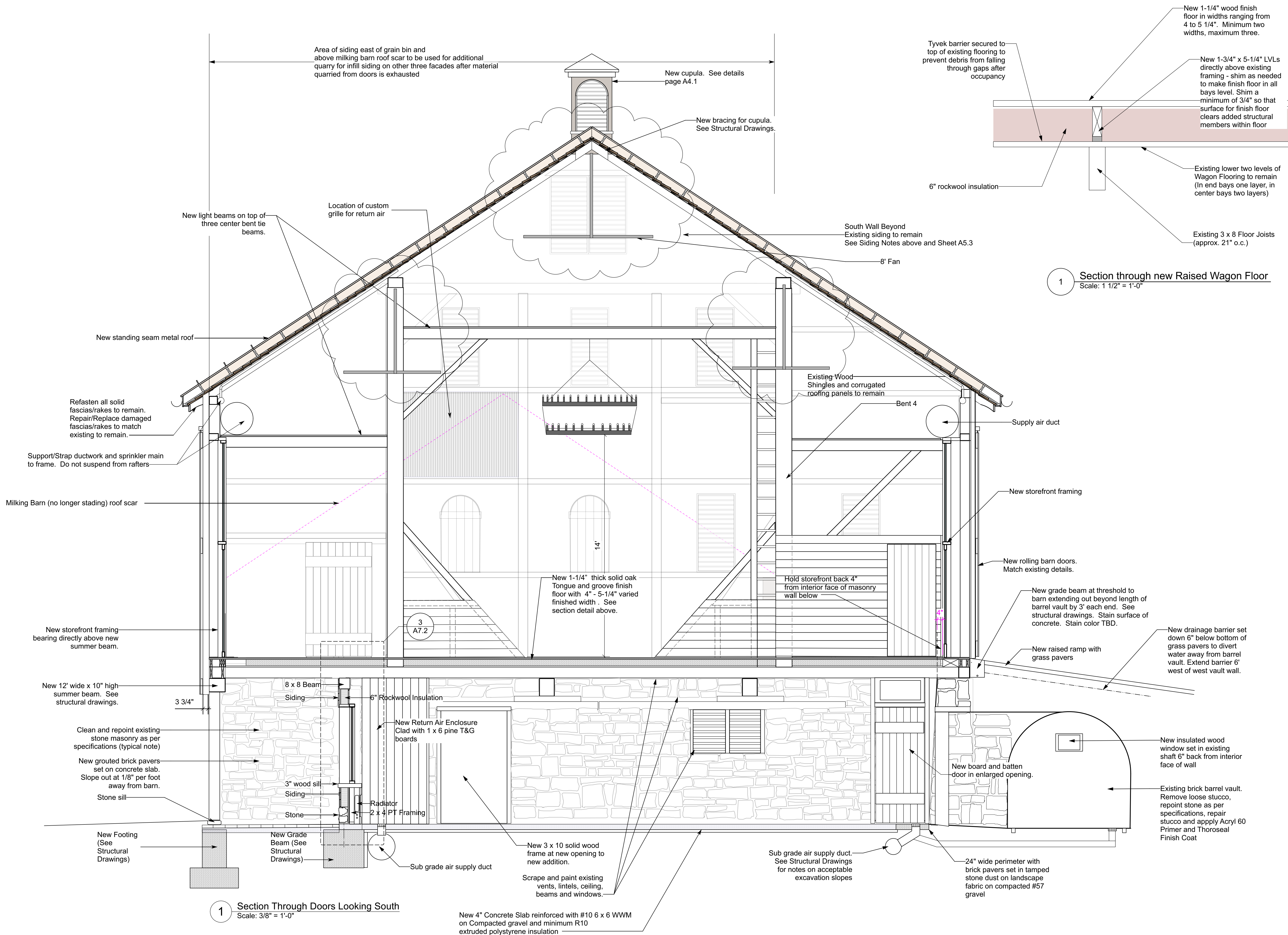


NORTH (magnetic)

Claggett Center Barn Renovation

3035 Buckeystown Pike
Adamstown, MD 21710

**BID SET
NOT FOR
CONSTRUCTION**



Preservation Consultant

Douglass C. Reed
Historic Structures Consultant
301-730-2699
doug@preservationassociatesinc.com

Structural Engineer

Matonak & Associates
931 Sweeney Drive
Hagerstown, MD 21740

Mech/Elect Engineer

Comfort Designs
620 Pennsylvania Avenue
Winchester, VA 22601

GROVE & DALL'OLIO
ARCHITECTS^{PLLC}



18 W. BOSCAWEN • WINCHESTER, VIRGINIA • 22601

Issue/Revision

Scale

Drawing Title

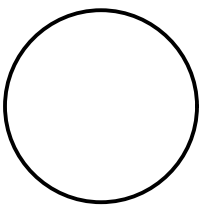
**Section through
Barn Facing South**

Date 10/1/2021

Scale As Noted Project Number 20180

Drawing Number

A5.1



NORTH (magnetic)

Claggett Center Barn Renovation

3035 Buckeystown Pike
Adamstown, MD 21710

**BID SET
NOT FOR
CONSTRUCTION**

Preservation Consultant

Douglass C. Reed
Historic Structures Consultant
301-730-2699
doug@preservationassociatesinc.com

Structural Engineer

Matonak & Associates
931 Sweeney Drive
Hagerstown, MD 21740

Mech/Elect Engineer

Comfort Designs
620 Pennsylvania Avenue
Winchester, VA 22601

GROVE & DALL'OLIO
ARCHITECTS^{PLLC}



18 W. BOSCAWEN • WINCHESTER, VIRGINIA • 22601

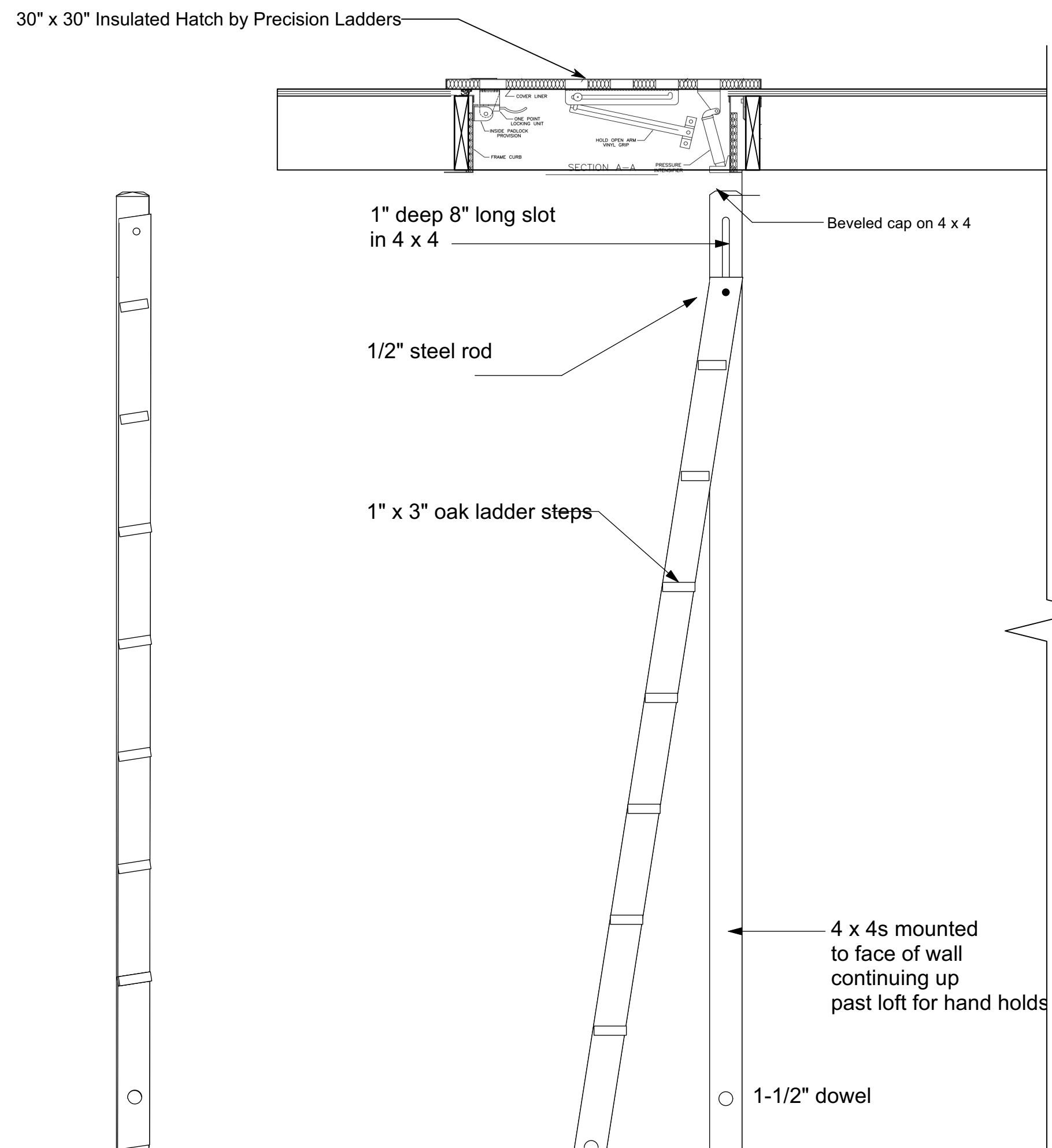
Issue/Revision Seal

Drawing Title

Details

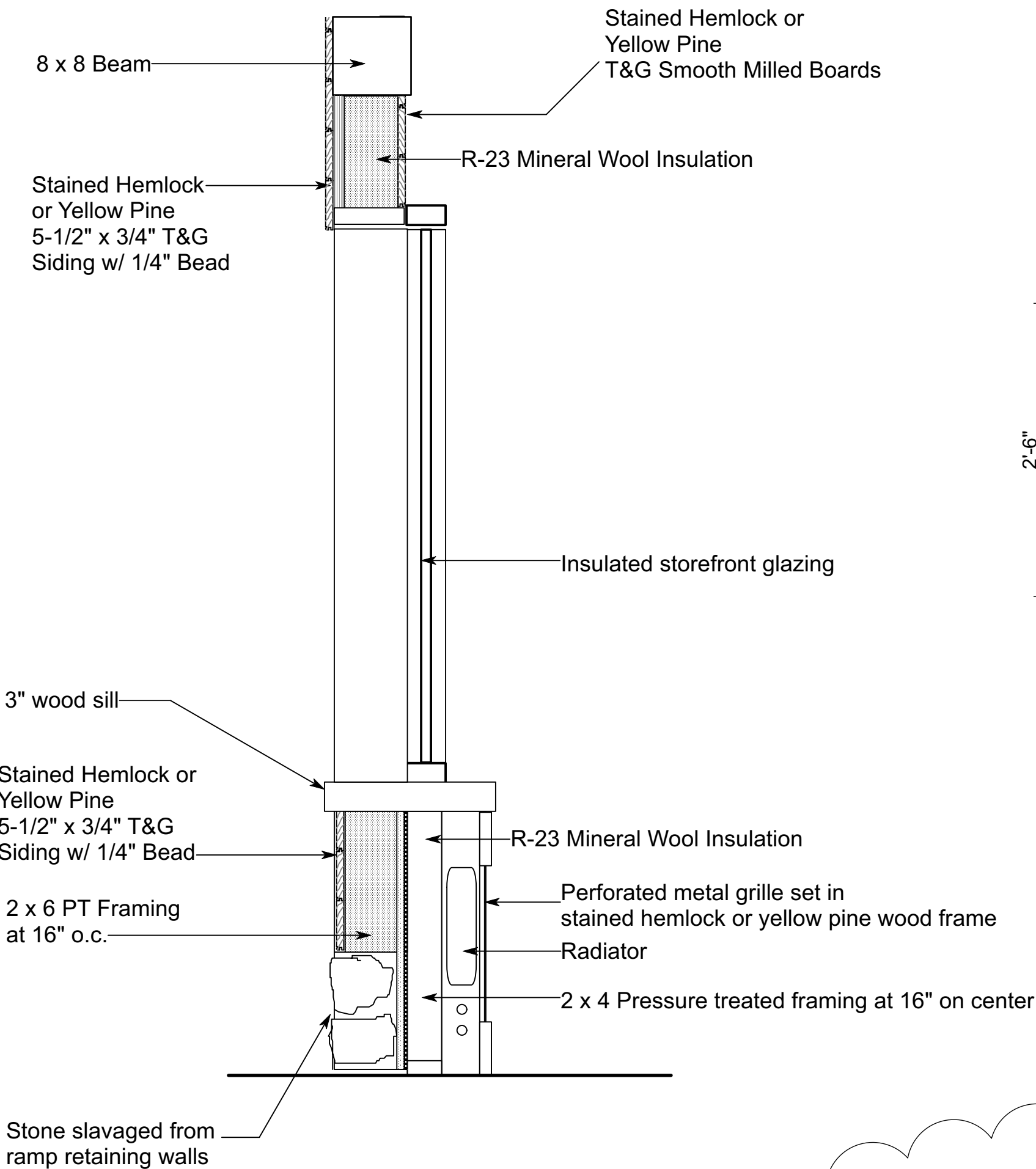
Date: 10/1/2021
Scale: As Noted Project Number: 20180
Drawing Number

A7.2

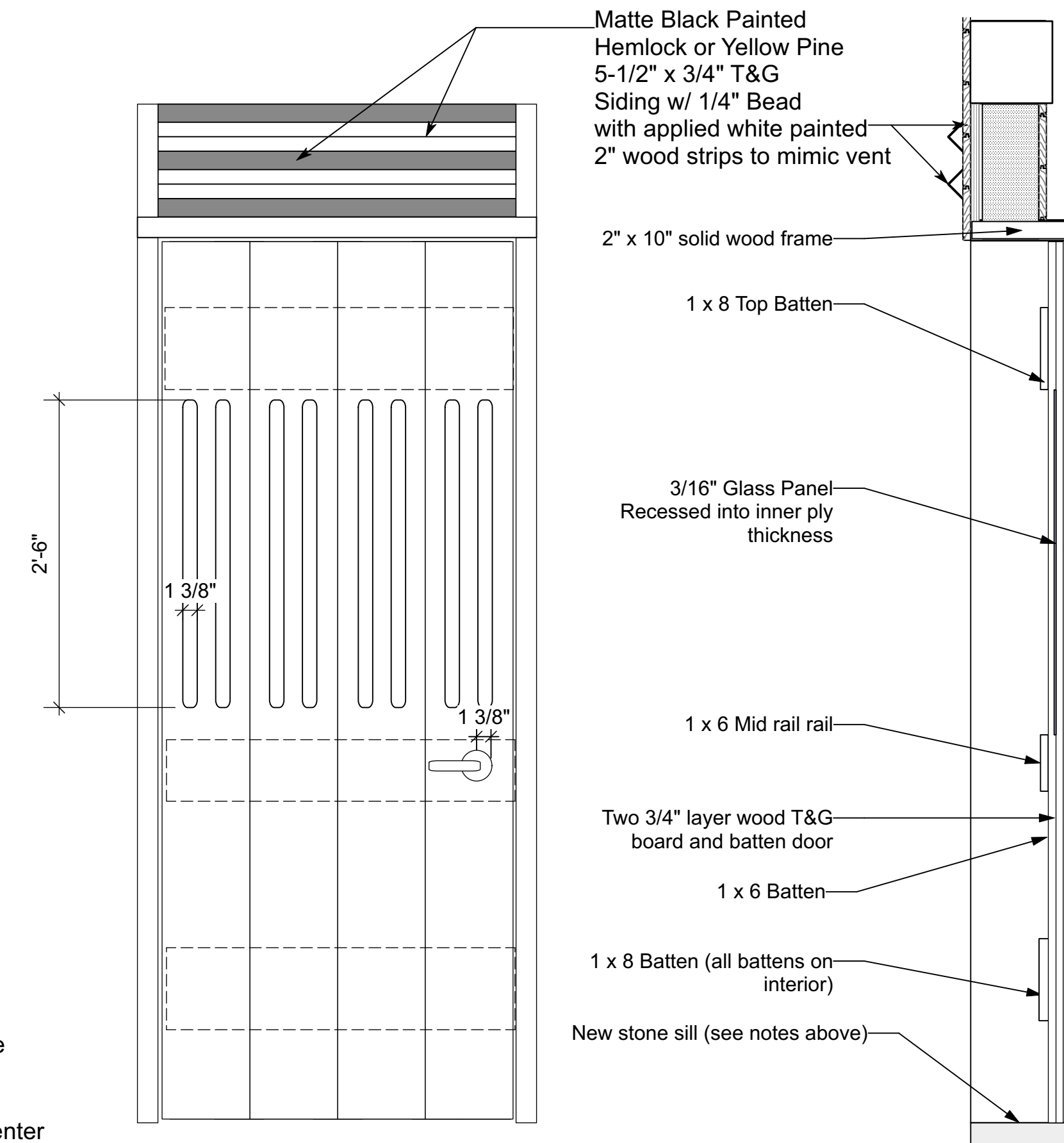


1 Ladder in Closed Position
Scale: 1" = 1'-0"

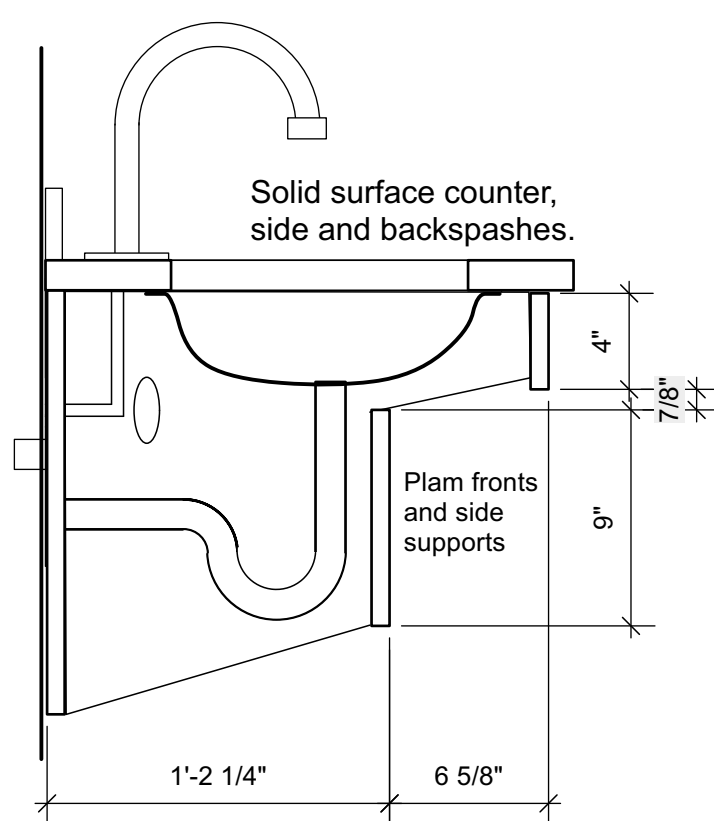
2 Ladder in Open Position
Scale: 1" = 1'-0"



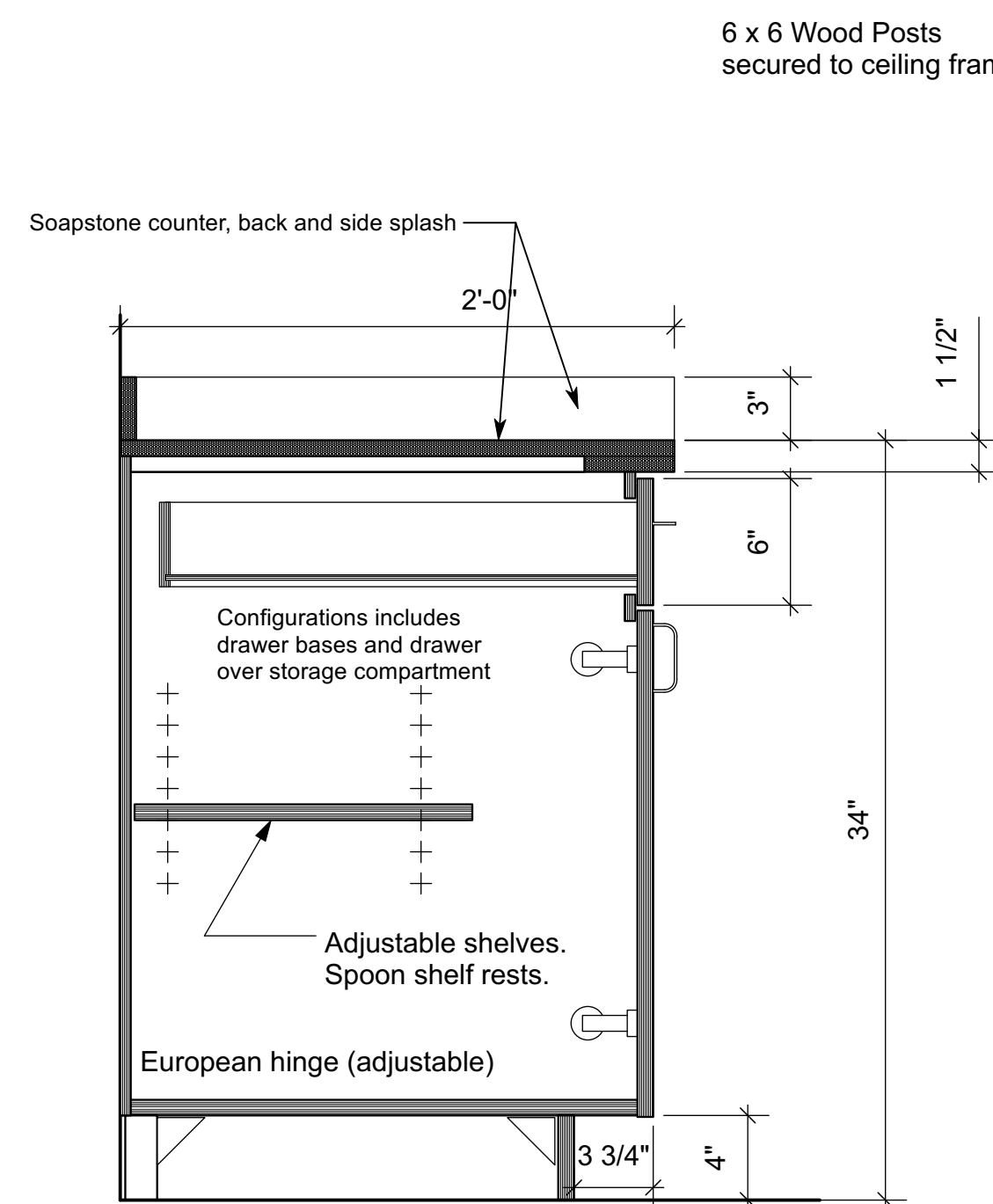
3 Detail through stable wall
Scale: 1" = 1'-0"



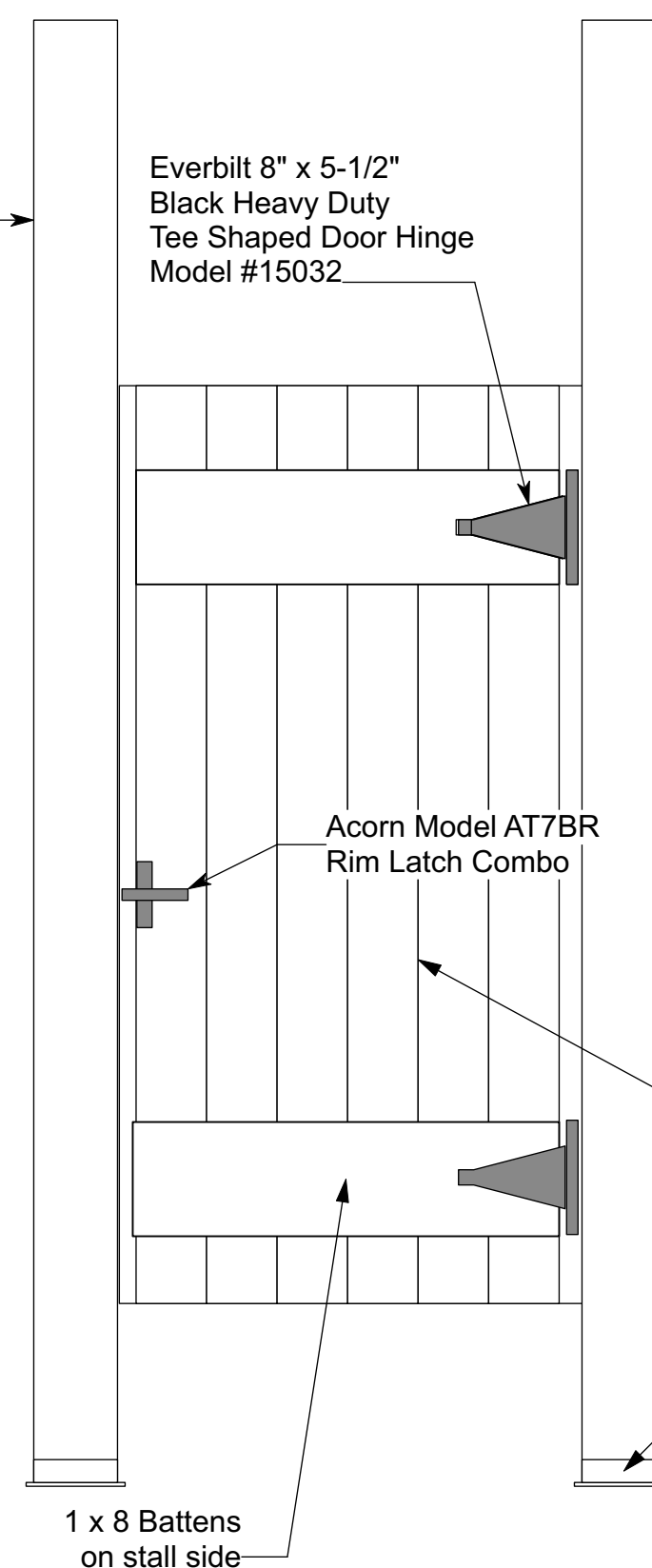
4 Stable door exterior elevation and section
Scale: 1" = 1'-0"



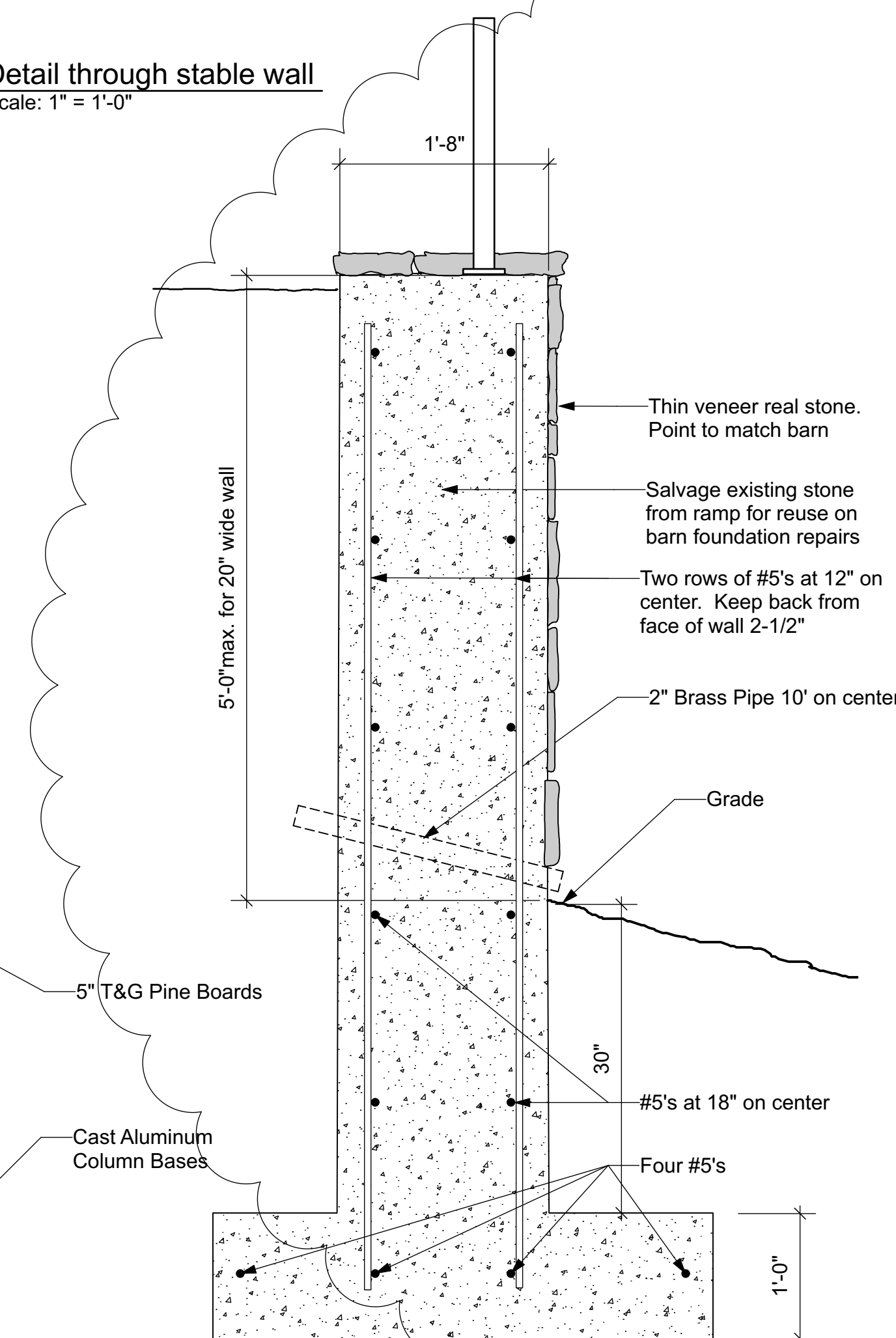
5 Typical Lavatory
Scale: 1 1/2" = 1'-0"



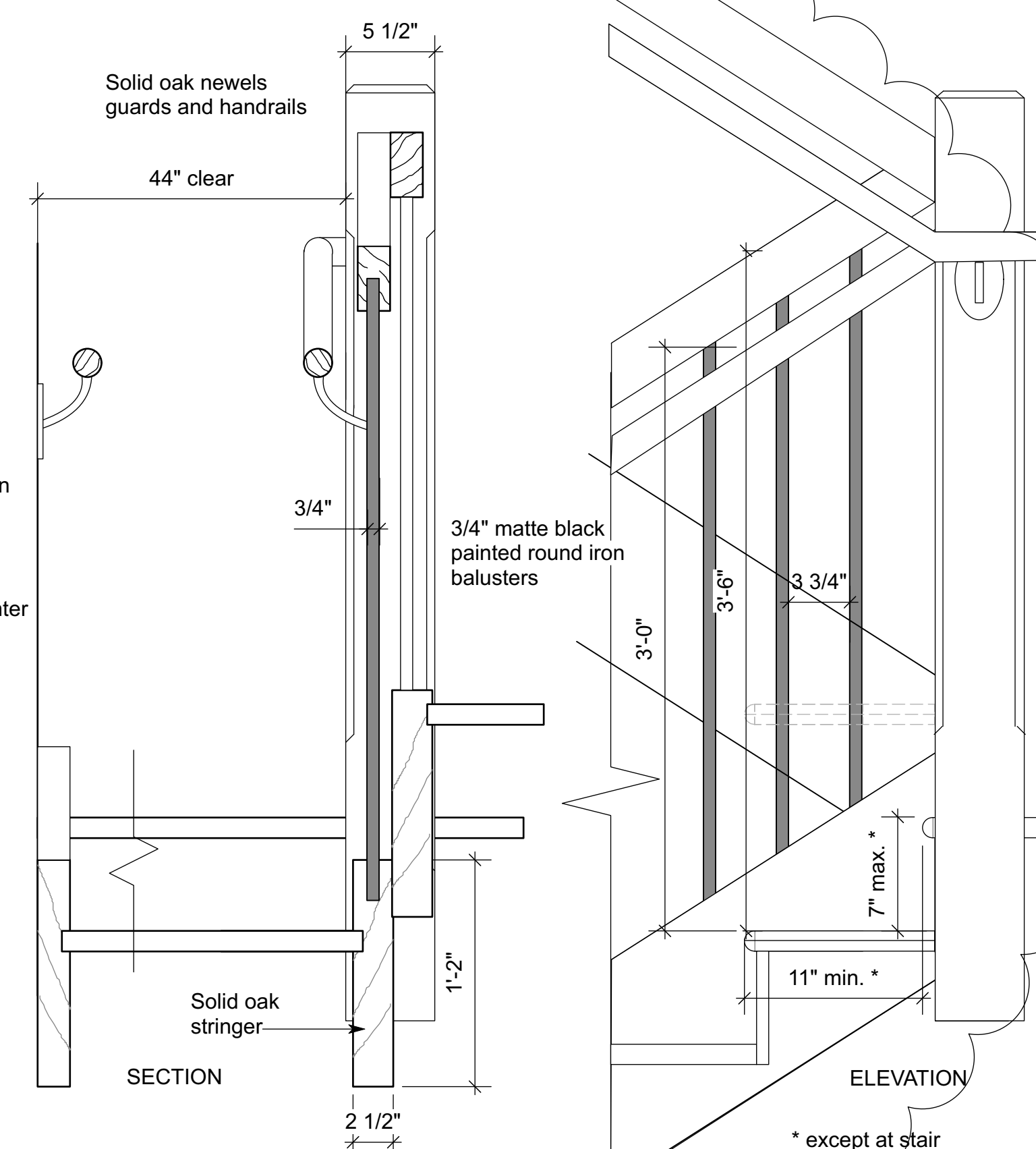
6 Base Cabinet Detail
Scale: 1 1/2" = 1'-0"



7 Bathroom Stall Detail
Scale: 1" = 1'-0"



8 Retaining Wall Detail
Scale: 1" = 1'-0"



9 Handrail/Stair Detail
Scale: 1 1/2" = 1'-0"